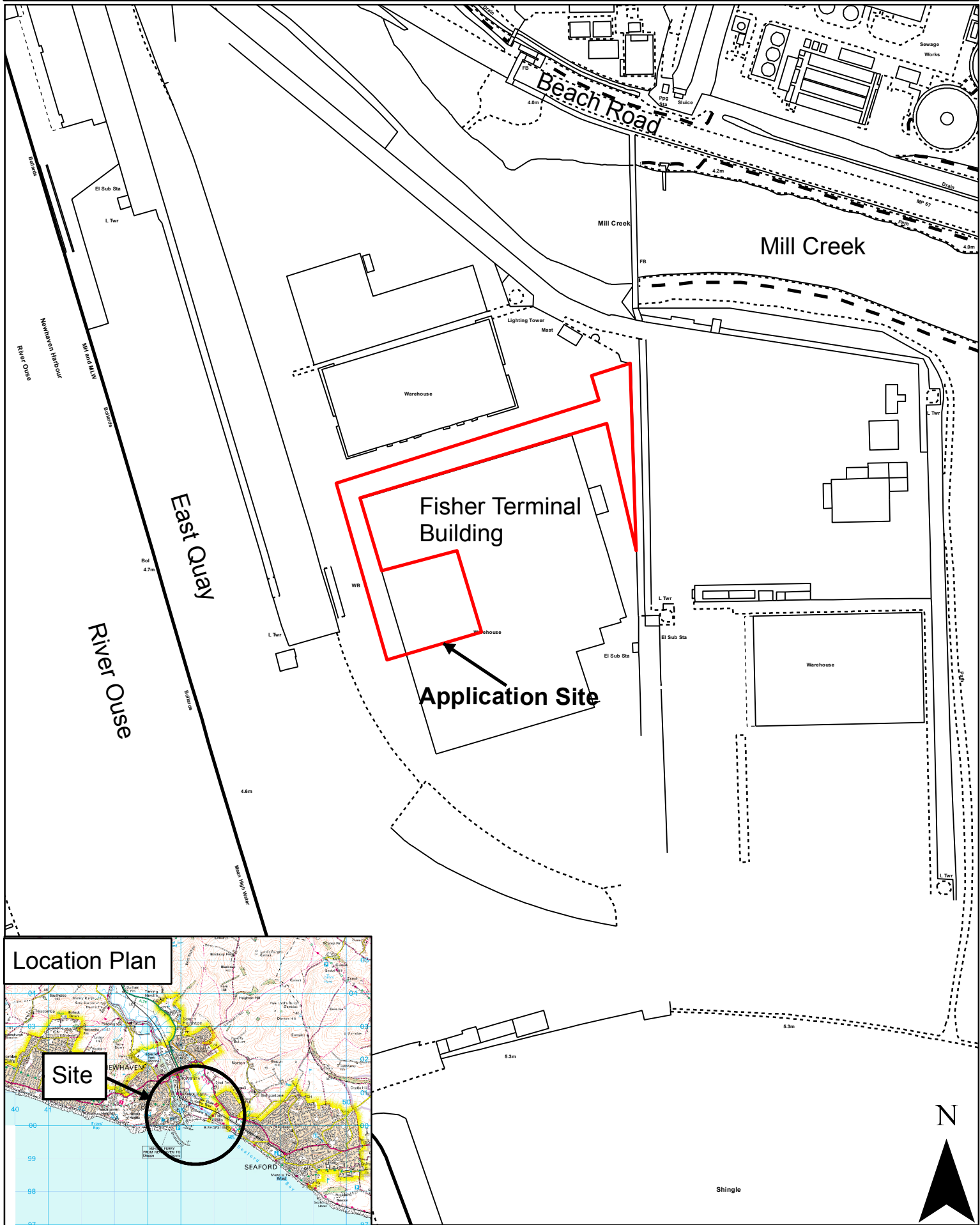
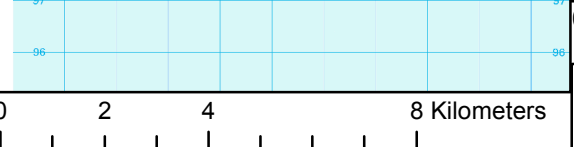


# LW/815/CM

## 4A Fisher Terminal, East Quay, Newhaven



**Location Plan**



Rupert Clubb BEng (Hons) CEng MICE, Director of Communities, Economy and Transport, East Sussex County Council

Reproduced from the Ordnance Survey mapping with the permission of the Controller of Her Majesty's Stationary Office © Crown Copyright. Unauthorised reproduction infringes Crown copyright and may lead to prosecution or civil proceedings. East Sussex County Council